

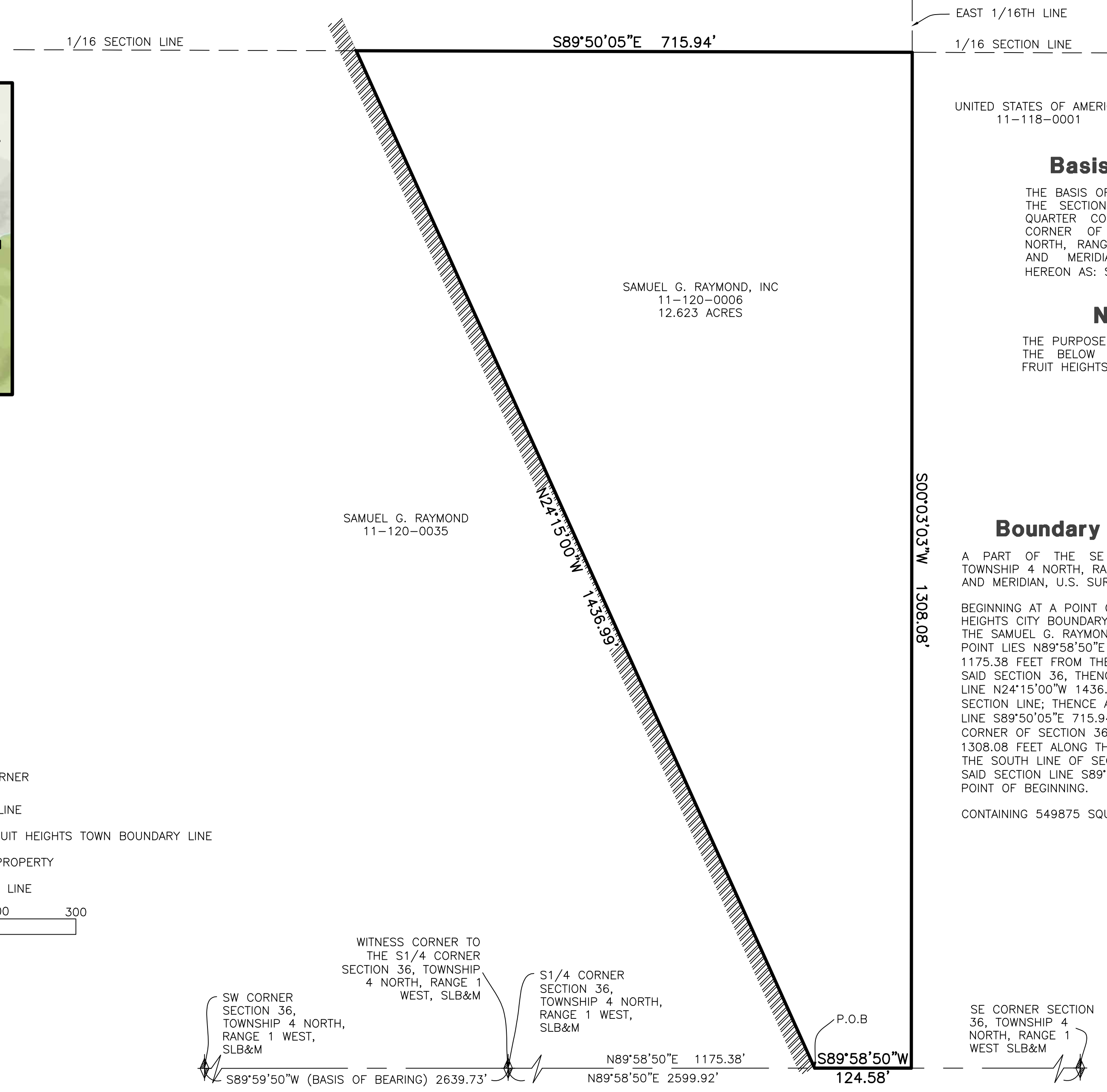
SHEET
1 of 1

CORPORATE LIMITS OF CITY OF FRUIT HEIGHTS

PART OF THE SOUTHEAST QUARTER OF SECTION 36, TOWNSHIP 4 NORTH, RANGE 1 WEST, SALT LAKE BASE AND MERIDIAN, U.S. SURVEY
FRUIT HEIGHTS CITY, DAVIS COUNTY, UTAH
DECEMBER, 2021



VICINITY MAP
SCALE: NONE



SAMUEL G. RAYMOND, INC
11-120-0006
12.623 ACRES

SAMUEL G. RAYMOND
11-120-0035

EAST 1/16TH LINE

1/16 SECTION LINE

UNITED STATES OF AMERICA
11-118-0001

Basis of Bearings

THE BASIS OF BEARINGS FOR THIS PLAT IS THE SECTION LINE BETWEEN THE SOUTH QUARTER CORNER AND THE SOUTHWEST CORNER OF SECTION 36 TOWNSHIP 4 NORTH, RANGE 1 WEST, SALT LAKE BASE AND MERIDIAN, U.S. SURVEY. SHOWN HEREON AS: S89°59'50\"/>

Narrative

THE PURPOSE OF THIS PLAT IS TO ANNEX THE BELOW DESCRIBED PROPERTY INTO FRUIT HEIGHTS CITY.

Boundary Description

A PART OF THE SE QUARTER OF SECTION 36, TOWNSHIP 4 NORTH, RANGE 1 WEST, SALT LAKE BASE AND MERIDIAN, U.S. SURVEY, DESCRIBED AS FOLLOWS:

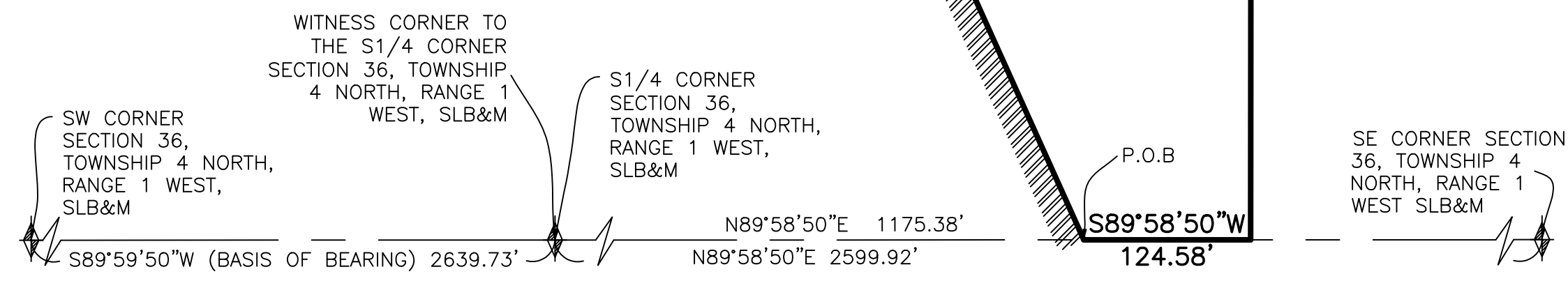
BEGINNING AT A POINT ON THE EXISTING FRUIT HEIGHTS CITY BOUNDARY AND THE WESTERLY LINE OF THE SAMUEL G. RAYMOND, INC. PROPERTY, WHICH POINT LIES N89°58'50\"/>

CONTAINING 549875 SQUARE FEET OR 12.623 ACRES

LEGEND

- = SECTION CORNER
- = BOUNDARY LINE
- = EXISTING FRUIT HEIGHTS TOWN BOUNDARY LINE
- = ADJOINING PROPERTY
- = SECTION TIE LINE

Scale: 1" = 100'



SURVEYOR'S CERTIFICATE

I, ROBERT D. KUNZ, DO HEREBY CERTIFY THAT I AM A REGISTERED PROFESSIONAL LAND SURVEYOR IN THE STATE OF UTAH IN ACCORDANCE WITH TITLE 58, CHAPTER 22, PROFESSIONAL ENGINEERS AND LAND SURVEYORS ACT; AND THAT I HAVE COMPLETED A SURVEY OF THE PROPERTY DESCRIBED ON THIS PLAT IN ACCORDANCE WITH SECTION 17-23-17 AND HAVE VERIFIED ALL MEASUREMENTS, AND HAVE PLACED MONUMENTS AS REPRESENTED ON THIS PLAT, AND THAT THIS PLAT IN CITY OF FRUIT HEIGHTS, DAVIS COUNTY, UTAH, HAS BEEN DRAWN CORRECTLY TO THE DESIGNATED SCALE AND IS A TRUE AND CORRECT REPRESENTATION OF THE HEREIN DESCRIBED LANDS INCLUDED IN SAID SUBDIVISION, BASED UPON DATA COMPILED FROM RECORDS IN THE DAVIS COUNTY RECORDER'S OFFICE AND FROM SAID SURVEY MADE BY ME ON THE GROUND, I FURTHER CERTIFY THAT THE REQUIREMENTS OF ALL APPLICABLE STATUTES AND ORDINANCES OF CITY OF FRUIT HEIGHTS, DAVIS COUNTY CONCERNING ZONING REQUIREMENTS REGARDING LOT MEASUREMENTS HAVE BEEN COMPLIED WITH.

SIGNED THIS _____ DAY OF _____, 20____

150228
UTAH LICENSE NUMBER

ROBERT D. KUNZ
STATE OF UTAH

CITY OF FRUIT HEIGHTS ACCEPTANCE

I HEREBY CERTIFY THAT THIS PLAT OF ANNEXATION TO THE CORPORATE LIMITS OF THE CITY OF FRUIT HEIGHTS WAS ACCEPTED BY THE MAYOR AND THE THE CITY COUNCIL OF FRUIT HEIGHTS ON THE _____, 20____.

IN WITNESS WHERE OF I HEREBY UNTO SET MY HAND AND _____ AFFIX THE CORPORATE SEAL OF THE CITY OF FRUIT HEIGHTS.

APPROVED THIS _____ DAY OF _____, 20____.

CITY OF FRUIT HEIGHTS MAYOR

CITY OF FRUIT HEIGHTS ENGINEER

I HEREBY CERTIFY THAT THIS OFFICE HAS EXAMINED THIS PLAT AND IT IS CORRECT IN ACCORDANCE WITH INFORMATION ON FILE IN THIS OFFICE.

CITY OF FRUIT HEIGHTS ENGINEER

DATE

CITY OF FRUIT HEIGHTS ATTORNEY

APPROVED BY THE CITY OF FRUIT HEIGHTS ATTORNEY THIS THE _____ DAY OF _____, 20____.

CITY OF FRUIT HEIGHTS ATTORNEY

DAVIS COUNTY SURVEYOR

THIS PLAT IS HEREBY APPROVED AS A FINAL LOCAL ENTITY PLAT AS REQUIRED BY UTAH CODE 17-23-20.

APPROVED THIS _____ DAY OF _____, 20____.

DAVIS COUNTY SURVEYOR

PROJECT INFORMATION

Surveyor: R. KUNZ	Project Name: FRUIT HEIGHTS CITY
Designer: D. CAVE	Number: 4825-12
Begin Date: 9-30-2015	Scale: 1-100'
	Revision: Checked:

Reeve & Associates, Inc.

4155 S. HARRISON BLVD., SUITE 310, OGDEN, UTAH 84403
TEL: (801) 621-3100 FAX: (801) 621-2666 www.reeve-associates.com
LAND PLANNERS • CIVIL ENGINEERS • LAND SURVEYORS
TRAFFIC ENGINEERS • STRUCTURAL ENGINEERS • LANDSCAPE ARCHITECTS

DAVIS COUNTY RECORDER

ENTRY NO. _____ FEE PAID _____
AND RECORDED, _____ AT _____
IN BOOK _____ OF _____
THE OFFICIAL RECORDS, PAGE _____

RECORDED FOR:

DAVIS COUNTY RECORDER

DEPUTY.