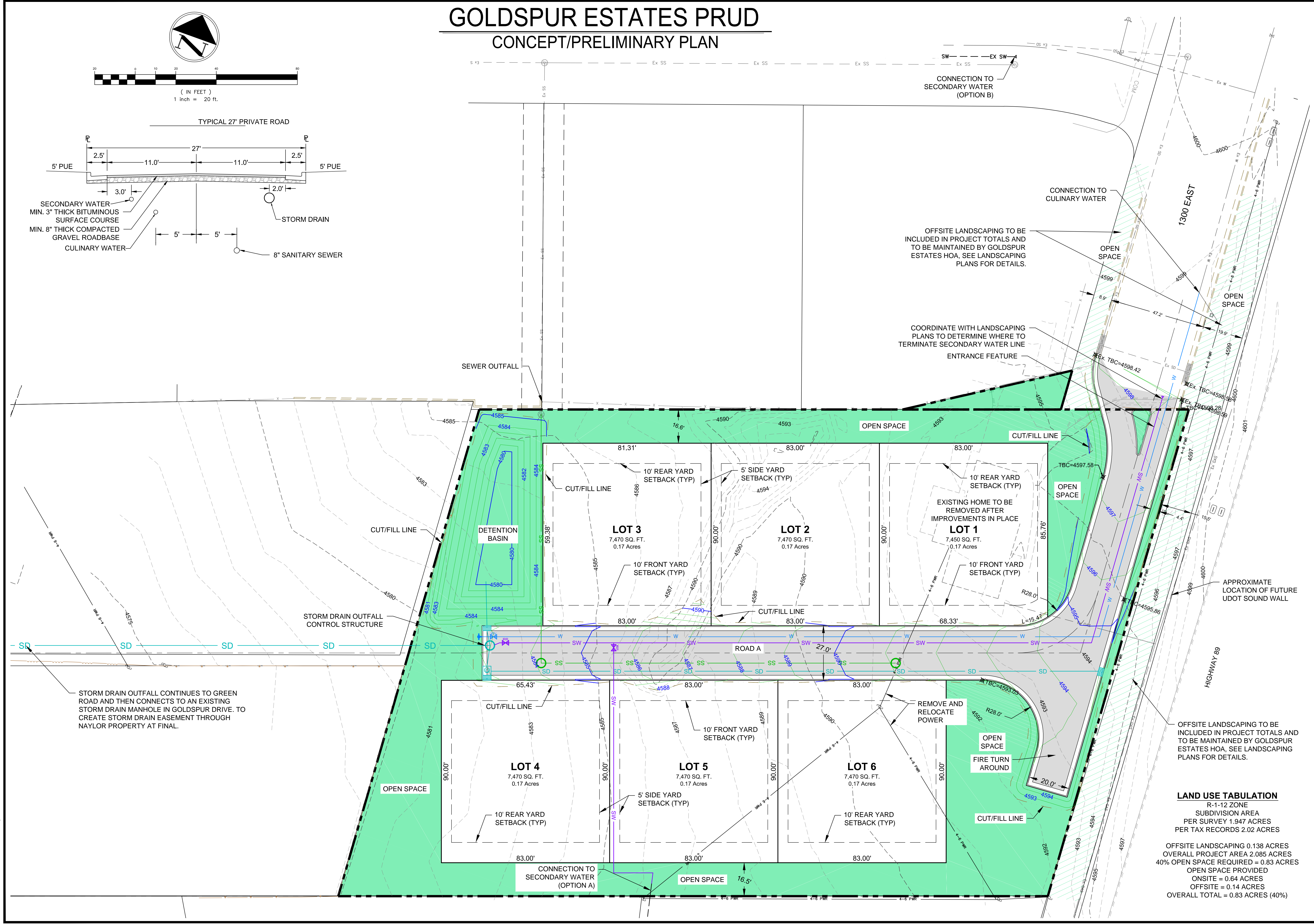
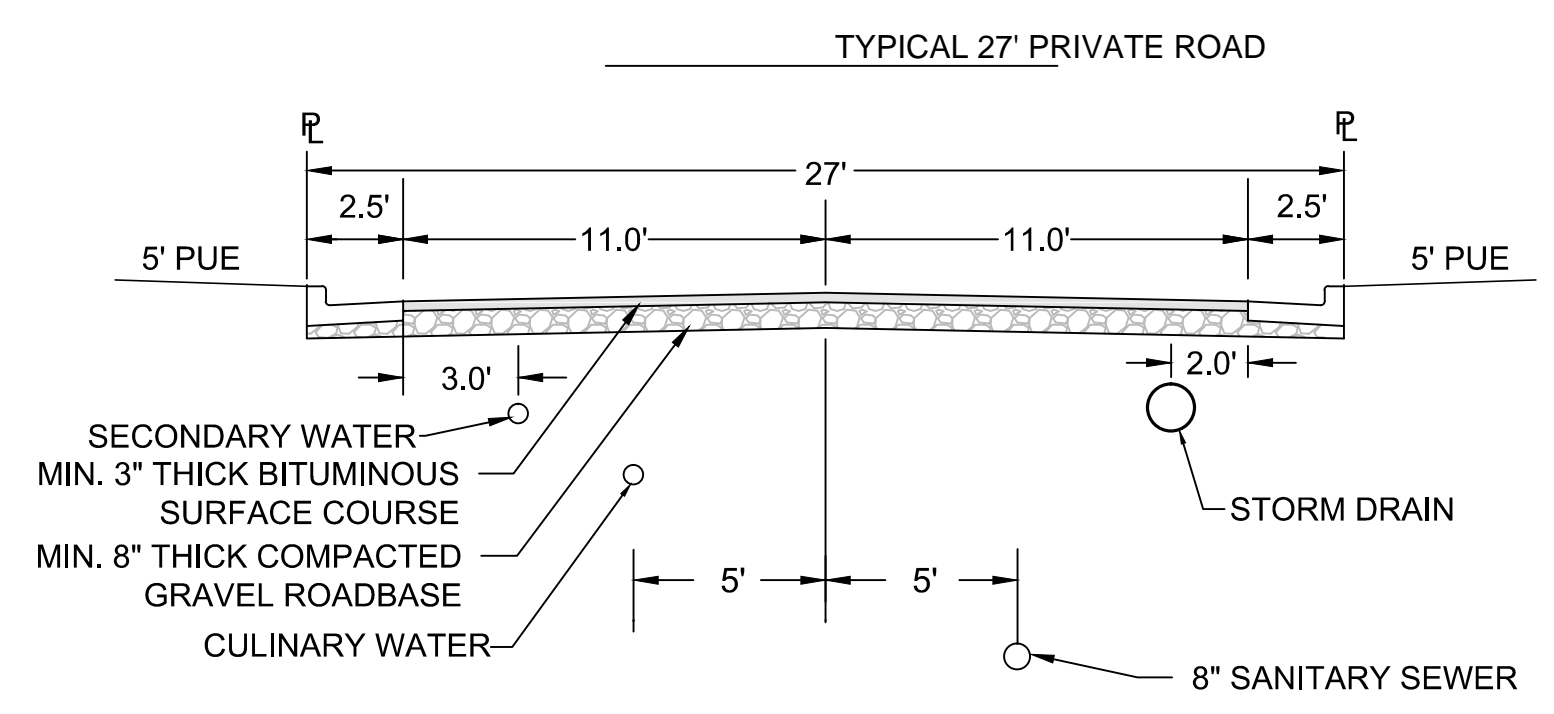
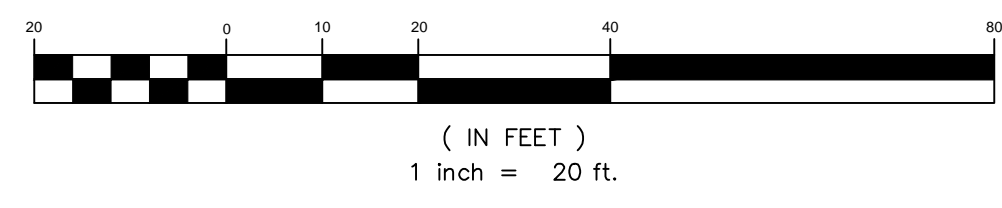
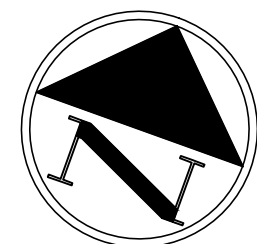


# GOLDSPUR ESTATES PRUD

## CONCEPT/PRELIMINARY PLAN



OFFSITE LANDSCAPING TO BE INCLUDED IN PROJECT TOTALS AND TO BE MAINTAINED BY GOLDSPUR ESTATES HOA, SEE LANDSCAPING PLANS FOR DETAILS.

COORDINATE WITH LANDSCAPING PLANS TO DETERMINE WHERE TO TERMINATE SECONDARY WATER LINE

STORM DRAIN OUTFALL CONTINUES TO GREEN ROAD AND THEN CONNECTS TO AN EXISTING STORM DRAIN MANHOLE IN GOLDSPUR DRIVE. TO CREATE STORM DRAIN EASEMENT THROUGH NAYLOR PROPERTY AT FINAL.

OFFSITE LANDSCAPING TO BE INCLUDED IN PROJECT TOTALS AND TO BE MAINTAINED BY GOLDSPUR ESTATES HOA, SEE LANDSCAPING PLANS FOR DETAILS.

**LAND USE TABULATION**

R-1-12 ZONE
SUBDIVISION AREA
PER SURVEY 1.947 ACRES
PER TAX RECORDS 2.02 ACRES

OFFSITE LANDSCAPING 0.138 ACRES  
 OVERALL PROJECT AREA 2.085 ACRES  
 40% OPEN SPACE REQUIRED = 0.83 ACRES  
 OPEN SPACE PROVIDED  
 ONSITE = 0.64 ACRES  
 OFFSITE = 0.14 ACRES  
 OVERALL TOTAL = 0.83 ACRES (40%)

NO.	REVISION

DATE

DRAWING IS NOT TO SCALE IF BAR DOES NOT MEASURE 1 INCH

### ATWATER SUBDIVISION

## CONCEPT/PRELIMINARY PLAN

FRUIT HEIGHTS CITY, DAVIS COUNTY, UTAH

Scott P. McFarland, PE  
 207 East 1000 South  
 Layton, Utah 84043  
 801.226.9797 (M)  
 smc@meaeng.com



DESIGN: SPM  
 DRAWN: SPM  
 CHECKED: SPM  
 DATE: 7-27-20

SHEET:  
PR1