

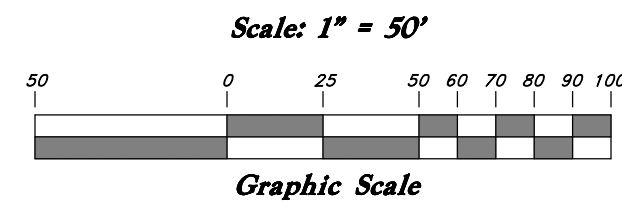
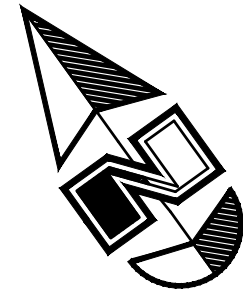
# The Heights Subdivision

## A part of the Southwest Quarter of Section 1, T3N, R1W, SLB&M, U.S. Survey

### Fruit Heights City, Davis County, Utah

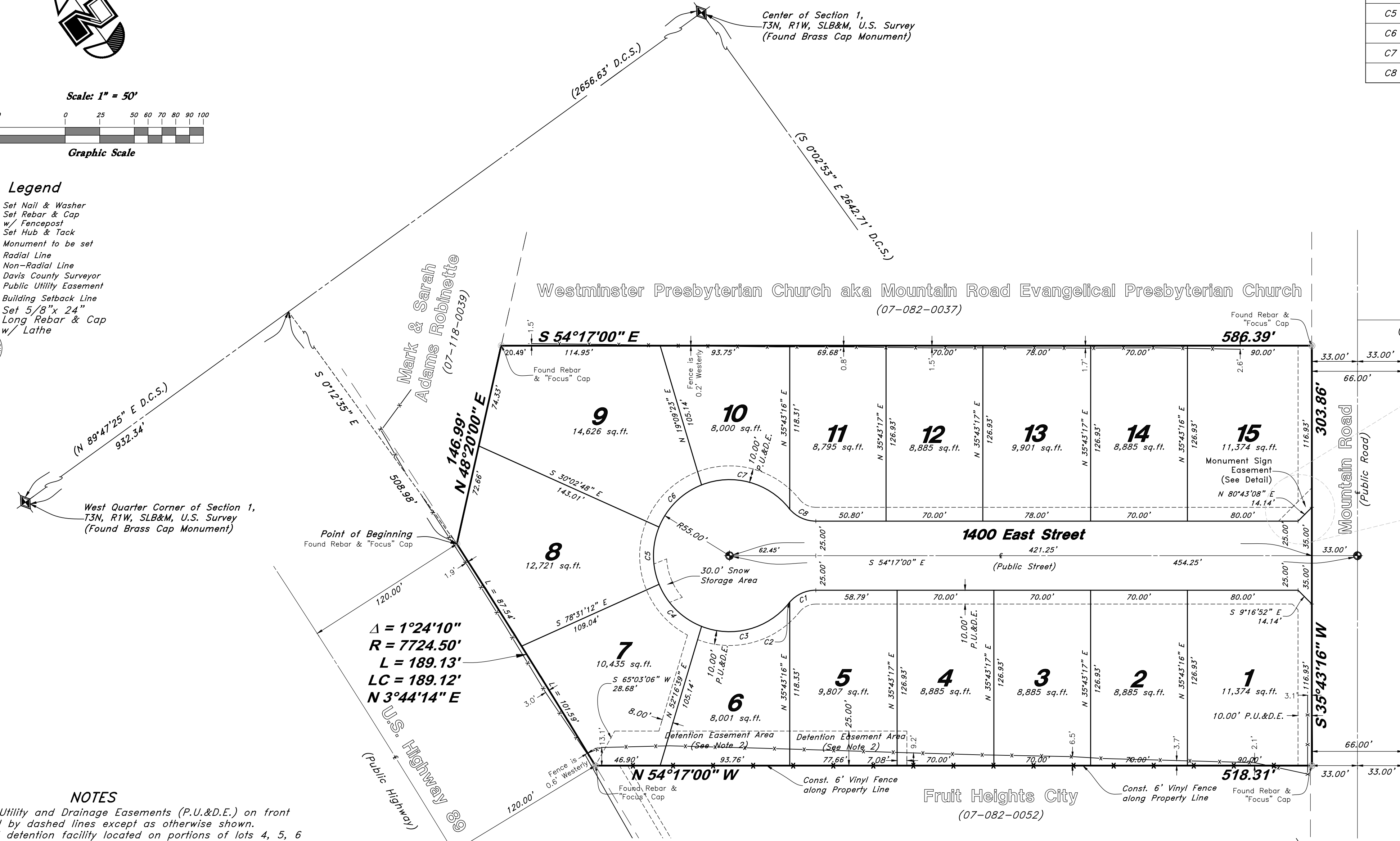
**December 2019**

PROPERTY LINE CURVE DATA					
Curve #	Delta	Radius	Length	Chord Direction	Chord Length
C1	48°59'33"	25.00'	21.38'	N 78°46'46" W	20.73'
C2	2°19'32"	25.00'	1.01'	S 75°33'42" W	1.01'
C3	72°52'44"	55.00'	69.96'	N 69°09'42" W	65.34'
C4	46°20'27"	55.00'	44.48'	N 9°33'06" W	43.28'
C5	44°11'45"	55.00'	42.43'	N 35°43'00" E	41.38'
C6	46°20'31"	55.00'	44.49'	N 80°59'08" E	43.28'
C7	72°52'41"	55.00'	69.96'	S 39°24'16" E	65.34'
C8	49°03'46"	25.00'	21.41'	S 29°45'07" E	20.76'



#### Legend

- ▲ Set Nail & Washer
- Set Rebar & Cap w/ Fencepost
- Set Hub & Tack
- ⊕ Monument to be set
- (Rad.) Radial Line
- (N/R) Non-Radial Line
- (D.C.S.) Davis County Surveyor
- - - Public Utility Easement
- - - Building Setback Line
- ⊙ Set 5/8" x 24" Long Rebar & Cap w/ Lathe



#### NOTES

1. 10' wide Public Utility and Drainage Easements (P.U.&D.E.) on front lot lines as indicated by dashed lines except as otherwise shown.
2. The underground detention facility located on portions of lots 4, 5, 6 and 7 will be installed, and graded by the developer, and will be permanently maintained by the Homeowners Association. Underground Maintenance to be performed by Home Owners Association. Lot Owner is responsible for any Landscaping maintenance above ground.
3. Geotechnical Report was performed by CMT Engineering Laboratories, dated May 7, 2019 under Project Number 900041.

**GREAT BASIN ENGINEERING, INC.**  
5746 SOUTH 1475 EAST OGDEN, UTAH 84403  
MAIN (801)394-4515 S.L.C (801)521-0222 FAX (801)392-7544  
WWW.GREATBASINENGINEERING.COM

12/16/2019  
No. 6242920  
ANDY HUBBARD  
STATE OF UTAH

Sheet 2 of 2

DAVIS COUNTY RECORDER

ENTRY NO. \_\_\_\_\_ FEE PAID \_\_\_\_\_  
FILED FOR RECORD AND  
RECORDED \_\_\_\_\_  
IN BOOK \_\_\_\_\_ OF OFFICIAL  
RECORDS, PAGE \_\_\_\_\_ RECORDED  
FOR \_\_\_\_\_

DAVIS COUNTY RECORDER

BY: \_\_\_\_\_ DEPUTY